



VINODRAI
ENGINEERING YOUR GROWTH

*Introducing India's Only
Clamshell Bi-Axial Rotational Moulding Machine*

Inspired by Nature...



*Fuel Efficient Technology for
Large Rotational Moulded Tanks
5000 ltr to 30000 ltr tank.*

ENGINEERING YOUR GROWTH

“Rock N Roll is no more an Option”

Vinodrai Engineers has pioneered in introducing India's first Clamshell range of Rotational Moulding Machines for manufacturing high capacity tanks. These machines can manufacture horizontal as well as vertical tanks between the capacities of 5000 and 30000 lts efficiently. These machines are designed to assure uniformity of wall thickness of the products regardless of skill of the operator. Clamshell machine is highly suitable for making large rotational moulded products like Portable Toilets, Septic Tanks and shapes other than round. So Rock N Roll is no more an Option.

Highlights of Clamshell Range of Machines:

Highly Productive and Fuel Efficient.

Negligible Rejections.

Suitable for making multilayer foam insulated tanks.

Environment friendly closed oven with forced air circulation.

Low installed KiloWatts.

Less dependent on Labor.

Consistent product Quality.

High on safety with hydraulic hood lifting mechanism.

Automatic vertical alignment system.

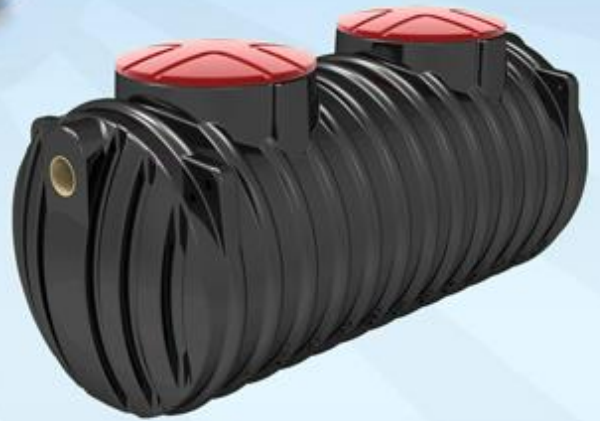
Clamshell & Rock N Roll Machine comparison:-

Sr No.	Description	Clamshell Machine	Rock N Roll Machine
1	Arm Movement	Bi-Axial 360o	45° Rocking
2	Heating of Mould	In a Closed Oven	Open Fired
3	Product Thickness	Uniform	Un Even
4	Material Usages	Low	High
5	Multi-Layer	Easy to Produce	Difficult
6	Process Control	Controlled Process	Operator Dependent
7	Fuel Cost	Low	High
8	Electric Power	Low	High
9	Quality of Product	Consistent	Variable
10	Labor Requirement	Less	More

Making Ideas Happen in Roto Moulding



Clamshell Bi-Axial Machine gives you complete freedom to excel in manufacturing products of any desired shape and design as good as round geometries.



Value for Money

Specifications Clamshell Range of Machines

Model	CS-5000	CS-7500	CS-10000	CS-20000	CS-25000	CS-30000
Type	Clamshell	Clamshell	Clamshell	Clamshell	Clamshell	Clamshell
Arm	One	One	One	One	One	One
Arm Type	U Arm 5000 Lit	U Arm 7500 Lit	U Arm 10000 Lit	U Arm 20000 Lit	U Arm 25000	U Arm 30000
Prod.Per Day (Ltr .per 24 hrs)	80,000	100,000	1,20,000	1,60,000	1,50,000	1,80,000
Production Capacity	16 Tanks 5000	14 Tanks 7500	12 Tanks 10,000	8Tanks of 20,000	6 Tanks of 25,000	6 Tanks of 30,000
Spider Diamenter	2400 mm	2600 mm	2800 mm	3200 mm	3800 mm	3800 mm
Control	Electric	Electric	Electric	Electric	Electric	Electric
Programmable Logical Control (PLC)	Optional	Optional	Optional	Optional	Optional	Optional
Burner	Single Stage	Single Stage	Two Stage	Two Stage	Two Stage	Two Stage
Fuel	Diesel	Diesel	Diesel	Diesel	Diesel	Diesel
Fuel (Optional)	Gas	Gas	Gas	Gas	Gas	Gas
Fuel Consumption (Diesel)	11 ltr Per Cycle	16 Ltr Per Cycle	30 Ltr Per Cycle	35 Ltr Per Cycle	40 Ltr Per Cycle	40 Ltr Per Cycle
Fuel Consumption (Gas)	9.3 Kg. Per Cycle	13.50 Kg Per Cycle	25.5 Kg Per Cycle	30 Kg Per Cycle	34 Kg Per Cycle	34 Kg Per Cycle
Process Temp.	210 °C	210 °C	210 °C	210 °C	210 °C	210 °C
Total Cycle Time	90 Min	100 Min	120 Min	180 Min	240 Min	240 Min
Cooling	Air Cooling	Air Cooling	Air Cooling	Air Cooling	Air Cooling	Air Cooling
Power Requirement	12.5 HP	18 HP	24 HP	26 HP	27 HP	28 HP
Supply Voltage	415 Volt 50 Hz	416 Volt 50 Hz	417 Volt 50 Hz	418 Volt 50 Hz	419 Volt 50 Hz	420 Volt 50 Hz
Major Axis RPM	3 Phase & N	3 Phase & N	3 Phase & N	3 Phase & N	3 Phase & N	3 Phase & N
Machine Space in Mt	4	4	4	3	2	2
	8.5 L x 6.5 W x 6 H	11 L x 7 W x 7 H	11.5 L x 8 W x 8 H	16 L x 9.5 W x 8.5 H	18 L x 9.5 W x 10 H	18 L x 9.5 W x 10.5 H

* Specifications are subjected to improvement

VINODRAI ENGINEERS P. LTD.

12 Km Stone, Jalna-Aurangabad Road, Village Dawalwadi, Dist: Jalna,

Jalna- 431 203 (Maharashtra), India.

Phone: +91 2482 262000, E Mail: vinodraieng@gmail.com

www.vinodrai.com

